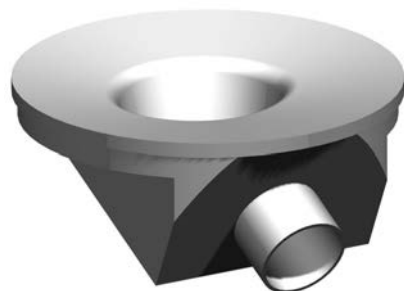


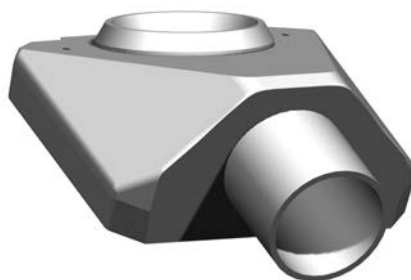
2.2.6 SISTO-C Behälterventile

SISTO-C Bodenablassventile werden typischerweise an der tiefsten Stelle des Behälterbodens eingeschweißt. SISTO bietet verschiedene Einschweißkonstruktionen an.

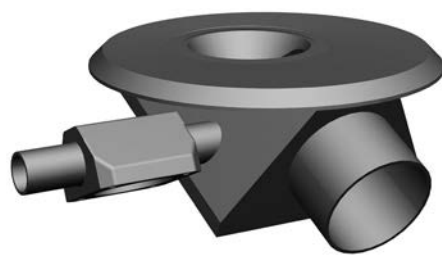
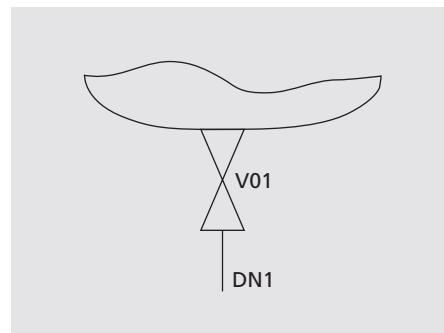
- Zum Einschweißen in den Behälterboden/-wand
- Kundenspezifische Herstellung
- Varianten:
 - Mit Y-Abgängen
 - Mit Spülanschluss
 - Zum Einbau an die Behälterwand
 - Als Mehrsitzventil
- Ermöglicht restlose Entleerung
- DN 6 bis DN 150



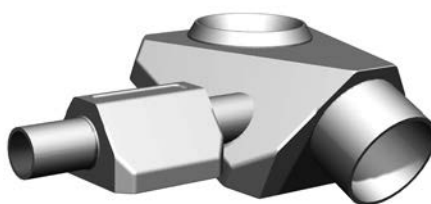
SISTO-CBAV-F



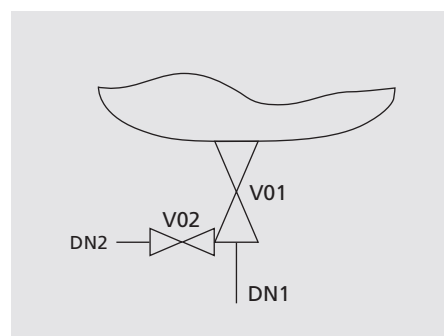
SISTO-CBAV



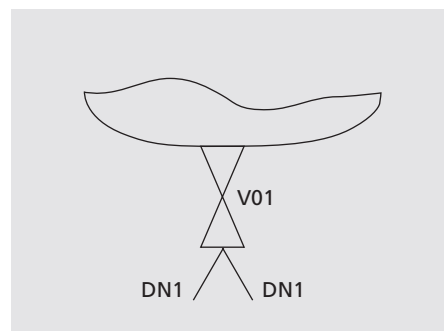
SISTO-CBAV-F-AV



SISTO-CBAV-AV



CBAV-F-Y



2.2.6 SISTO-C Tank Valves

SISTO-C tank bottom valves are typically welded onto the tank bottom at its lowest point. SISTO offers various design options for welding the valve into the tank.

- For welding onto tank bottom/-wall
- Customised valve manufacturing
- Variants:
 - As Y-pattern body design
 - With flush connection
 - For welding onto tank wall
 - As multiport-valve
- Allows complete draining
- DN 6 to DN 150